

Phylogenetic relationships among extinct and extant turtles: the position of Pleurodira and the effects of the fossils on rooting crown-group turtles

Juliana Sterli^{1,2}

¹ CONICET - Museo Paleontológico Egidio Feruglio, Av. Fontana 140, 9100 Trelew, Chubut, Argentina

² E-mail: jsterli@mef.org.ar

Key words: molecules, morphology, phylogeny, Testudinata, Testudines

Abstract

The origin and evolution of the crown-group of turtles (Cryptodira + Pleurodira) is one of the most interesting topics in turtle evolution, second perhaps only to the phylogenetic position of turtles among amniotes. The present contribution focuses on the former problem, exploring the phylogenetic relationships of extant and extinct turtles based on the most comprehensive phylogenetic dataset of morphological and molecular data analyzed to date. Parsimony analyses were conducted for different partitions of data (molecular and morphological) and for the combined dataset. In the present analysis, separate analyses of the molecular data always retrieve Pleurodira allied to Trionychia. Separate analysis of the morphological dataset, by contrast, depicts a more traditional arrangement of taxa, with Pleurodira as the sister group of Cryptodira, being Chelonioidea the most basal cryptodiran clade. The simultaneous analysis of all available data retrieves all major extant clades as monophyletic, except for Cryptodira given that Pleurodira is retrieved as the sister group of Trionychia. The paraphyly of Cryptodira is an unorthodox result, and is mainly caused by the combination of two factors. First, the molecular signal allies Pleurodira and Trionychia. Second, the morphological data with extinct taxa locates the position of the root of crown-group Testudines in the branch leading to Chelonioidea. This study highlights major but poorly explored topics of turtle evolution: the alternate position of Pleurodira and the root of crown turtles. The diversification of crown turtles is characterized by the presence of long external branches and short internal branches (with low support for the internal nodes separating the major clades of crown turtles), suggesting a rapid radiation of this clade. This rapid radiation is also supported by the fossil record, because soon after the appearance of the oldest crown-group turtles (Middle-Late Jurassic of Asia) the number and diversity of turtles increases remarkably. This evolutionary scenario of a rapid diversification of modern turtles into the major modern lineages is likely the reason for the difficulty in determining the interrelationships and the position of the root of crown-group turtles.

Contents

Introduction	93
Material and methods	94

<i>Taxonomic nomenclature</i>	94
<i>Taxonomic sampling</i>	94
<i>Character sampling</i>	95
<i>Phylogenetic analyses</i>	95
Results	97
<i>Morphological analysis with extinct taxa</i>	97
<i>Molecular analyses</i>	97
<i>Morphological and molecular analysis excluding extinct taxa</i>	99
<i>Morphological analysis excluding extinct taxa</i>	99
<i>Total evidence analysis</i>	99
Discussion	101
<i>Position of Pleurodira and the rooting problem</i>	101
<i>Short and not well supported internal branches and long external branches in molecular analyses:</i>	
<i>Rapid radiation or lack of information?</i>	102
<i>Importance of fossils</i>	102
<i>Testing the effects of long branches</i>	103
Conclusions	103
Acknowledgements	103
References	104

Introduction

Testudinata (sensu Joyce *et al.*, 2004) is a highly enigmatic clade of amniotes that is primarily characterized by the development of a bony shell that encloses the pectoral girdles within the rib cage (Burke, 1989). Although testudines are abundant in the fossil record, earliest forms remain relatively rare thus resulting in significant morphological gaps. As a consequence, both the origin of turtles and the phylogenetic relationships of the turtle crown-group are issues that remain controversial to date. In some way both issues are related. In fact, the rooting of crown-group turtles is difficult because a long branch separates them from their extant sister-group (*e.g.* archosaurs, lepidosaurs).

The question of the origin of turtles is a subject that has received much attention during the last decades through the development of several phylogenetic

analyses based mainly in morphological data. Among basal amniotes, turtles have been hypothesized to be the sister group of procolophonoids (Reisz and Laurin, 1991; Laurin and Reisz, 1995), pareiasaurs (Lee, 1993, 1995, 1996, 1997), and captorhinomorphs (Gauthier *et al.*, 1988). Similarly, within the derived reptilian clade Diapsida, turtles have been placed as sister to lepidosaurs (Müller, 2003, 2004; Hill, 2005) and sauropterygians (Rieppel and deBraga, 1996; deBraga and Rieppel, 1997; Rieppel and Reisz, 1999).

On the other hand, a large number of phylogenetic studies have been published on the evolution of the clade of turtles based on both morphological and molecular data over the course of the last fifteen years. The pioneer phylogenetic analysis of turtle evolution based on morphological data was published by Gaffney (1975) and it provided the basis of a series of further studies (see Gaffney *et al.*, 2007 and references therein). These studies established the interrelationships of the major clades of extinct and extant turtles and retrieved a major split in crown-group turtles, separating Cryptodira from Pleurodira. All published analyses of morphological data have since agreed with this basic result, although the position of several extinct groups is still debated. One group of studies retrieved all extinct turtles, except for three taxa (*Proganochelys quenstedti* Baur 1887, *Palaeochersis talampayensis* Rougier, de la Fuente and Arcucci 1995, and *Australochelys africanus* Gaffney and Kitching 1994), as belonging to either Cryptodira or Pleurodira based on morphological evidence (*e.g.* Gaffney, 1975; Gaffney and Meylan, 1988; Gaffney, 1996; Hirayama *et al.*, 2000; Gaffney *et al.*, 2007; Sterli *et al.*, 2007). Another group of morphology-based studies place additional extinct taxa outside the crown-group turtles (Rougier *et al.*, 1995; Joyce, 2007; Danilov and Parham, 2006, 2008; Sterli, 2008; Anquetin *et al.*, 2009).

Molecular analyses, finally, have provided a wealth of new information on the interrelationships among the major clades of extant turtles (Fujita *et al.*, 2004; Krenz *et al.*, 2005; Near *et al.*, 2005; Parham *et al.*, 2006; Iverson *et al.*, 2007; Thomson and Shaffer, 2010). The genes sequenced in these studies include mitochondrial genes (cytochrome b, 12S RNA) and nuclear genes (RAG-1, intron fingerprint protein R35) and were analyzed with parsimony and statistical (maximum likelihood and Bayesian analysis) methods. These molecular studies have shed much light and new data on the affinities of some clades of extant turtles (compared to the results obtained with morphological data) retrieving as a major novel result the

basal position of Trionychia as being the sister clade of all remaining extant cryptodiran turtles. Combined analysis of major turtle groups based on morphological and molecular data, however, are still scarce in the literature. Shaffer *et al.* (1997) is the only study that has used this approach so far. They analyzed 30 species (23 extant and 7 extinct) using 2 mitochondrial genes (cytochrome b and 12S RNA) and 115 morphological characters. In the total evidence analysis and in the morphological analyses with some or with all the extinct taxa included, Shaffer *et al.* (1997) retrieved Pleurodira and Cryptodira as monophyletic groups and *Proganochelys quenstedti* being the only extinct taxon located outside crown-group turtles.

The main objectives of the present paper are, first to explore the interrelationships of the major groups of turtles including a much larger sample of extinct and extant taxa and morphological and molecular characters than in previous analyses. Second, analyze the phylogenetic signal provided by different types of data, and third evaluate the impact of extinct taxa on the phylogenetic results. This contribution specifically focuses on the conflicting phylogenetic signal on the position of Pleurodira and the impact of extinct taxa on determining the placement of the root of crown-group turtles.

Material and methods

Taxonomic nomenclature

Suprageneric taxon names are used as defined by Joyce *et al.* (2004). Testudines refers to the ‘crown clade arising from the last common ancestor of *Chelonia* (orig. *Testudo*) *mydas* and *Chelus* (orig. *Testudo*) *fimbriatus*’ and all their descendents (Joyce *et al.*, 2004). Testudinata refers to the ‘apomorphy-based version of *Testudo*’ and includes crown group Testudines plus all stem taxa ‘with a complete turtle shell that is homologous with the shell present in *Chelonia* (orig. *Testudo*) *mydas*’ (Joyce *et al.*, 2004). Throughout this paper the term ‘clade’ or ‘group’ refer to the terms ‘subfamily’, ‘family’, or ‘superfamily’ of the rank-based nomenclature. The terminology for unrooted trees follows Wilkinson *et al.* (2007), where ‘adjacent group’ refers to the ‘unrooted analogue of sister group’.

Taxonomic sampling

The morphological matrix is based on the phylogenetic analysis of Sterli (2008), however, 8 taxa were

added (see on-line supplementary information -SI- 1 and 2) and the dataset, consequently, includes 51 extinct and 27 extant species of turtles and four outgroup taxa. This taxon sampling scheme almost triples the number of taxa included in the only combined analysis of molecular and morphological data performed to date (Shaffer *et al.*, 1997). This difference is mainly due to the inclusion of a large number of extinct taxa that were absent in the mentioned study. The taxon sampling includes representatives of the two major groups of Pleurodira (Chelidae and Pelomedusoides) and the major clades of Cryptodira (Trionychia [Carettochelyidae + Trionychidae], Kinosternoidea [Kinosternidae + Dermatemydidae], Chelonioida [Cheloniidae + Dermochelyidae], Platysternidae, Chelydridae, Testudinidae, Geoemydidae, and Emydidae). Furthermore many stem Testudines (*e.g. Proganochelys quenstedti*, *Palaeochersis talampayensis*, *Australochelys africanus*), as well as some stem representatives of the major subclades of crown group turtles [*e.g. Protochelydra zangerli* Erickson 1973, *Mongolemys elegans* Khozatskii and Mlynarski 1971, *Hoplochelys crassa* (Cope 1888), *Adocus beatus* (Ledy 1865)], were included.

The selection of outgroup taxa is related to the main hypotheses of turtle's sister groups based on morphological data. *Simosaurus gaillardoti* (Meyer, 1842) was chosen because Rieppel and deBraga (1996), deBraga and Rieppel (1997) and Rieppel and Reisz (1999) argued that turtles were the sister group of sauropterygians. *Sphenodon punctatus* Gray 1842 was chosen because Müller (2003, 2004) and Hill (2005) suggested lepidosauromorphs were the sister clade of turtles. *Owenetta kitchingorum* Reisz and Scott 2002 was chosen because Reisz and Laurin (1991) and Laurin and Reisz (1995) suggested procolophonoids as the sister group of turtles, while *Anthodon serrarius* Owen 1876 was chosen because Lee (1993, 1995) supported a sister group relationship between pareiasaurs and turtles.

Character sampling

The central aim of this contribution is the analysis of the available morphological and molecular data frequently used to explore the phylogenetic relationships of extant and extinct turtles. The morphological matrix includes 152 characters and is based on Sterli (2008), but three new characters were added and certain changes were performed in the scorings of some taxa (see SI 1). Molecular data includes all sequences

that have been used for phylogenetic analyses of turtle evolution and include three mitochondrial (12S RNA, 16S RNA, and cytochrome b) and two nuclear genes (RAG-1 and the intron of the fingerprint protein 35 [R35]). Nuclear genes are supposed not to be as saturated as mitochondrial genes and, consequently, they may be more adequate to analyze deeper cladogenesis (Engstrom *et al.*, 2004). However, only two nuclear genes (RAG-1 and R35) have been used to explore the phylogenetic relationships among the major clades of turtles and are sequenced in at least one species per major clades (Fujita *et al.*, 2004; Krenz *et al.*, 2005; Near *et al.*, 2005). Several phylogenetic analyses also included mitochondrial genes (Shaffer *et al.*, 1997; Krenz *et al.*, 2005) and therefore these are also included here (12S RNA, 16S RNA, and the cytochrome b). All the sequences were downloaded from GenBank (<http://www.ncbi.nlm.nih.gov/>) and their accession numbers are listed in SI 3.

Phylogenetic analyses

The phylogenetic analyses were performed using the program TNT (Goloboff *et al.*, 2008a, b). For the parsimony analysis all characters were treated as unordered and equally weighted. The transformation cost between transitions and transversions was considered equal and gaps were considered as a fifth state to preserve its phylogenetic information (Giribet and Wheeler, 1999). A total evidence analysis was conducted combining the morphological and molecular information, as well as several partitioned analyses to analyze the phylogenetic signal of each dataset (*e.g.* molecular vs. morphological, extant vs. extinct taxa, comparisons of the five genes). Given the presence of highly divergent taxa, denoted by the presence of long branches, several molecular analyses were run excluding these terminal taxa (*e.g.* Trionychia and Pleurodira). This procedure, known as long branch extraction (LBE; Siddall and Whiting, 1999; Pol and Siddall, 2001), aims to test the influence of long branches on the resultant topologies (*e.g.* long branch attraction).

The heuristic tree search consisted of a thousand replicates of Wagner trees (using random addition sequences) followed by Tree Bisection Reconnection (TBR) branch swapping (saving 10 trees per replication). All the most parsimonious trees found in the replicates were subject to a final round of TBR.

Branch support was calculated using Jackknife resampling (Lanyon, 1985) as incorporated in TNT

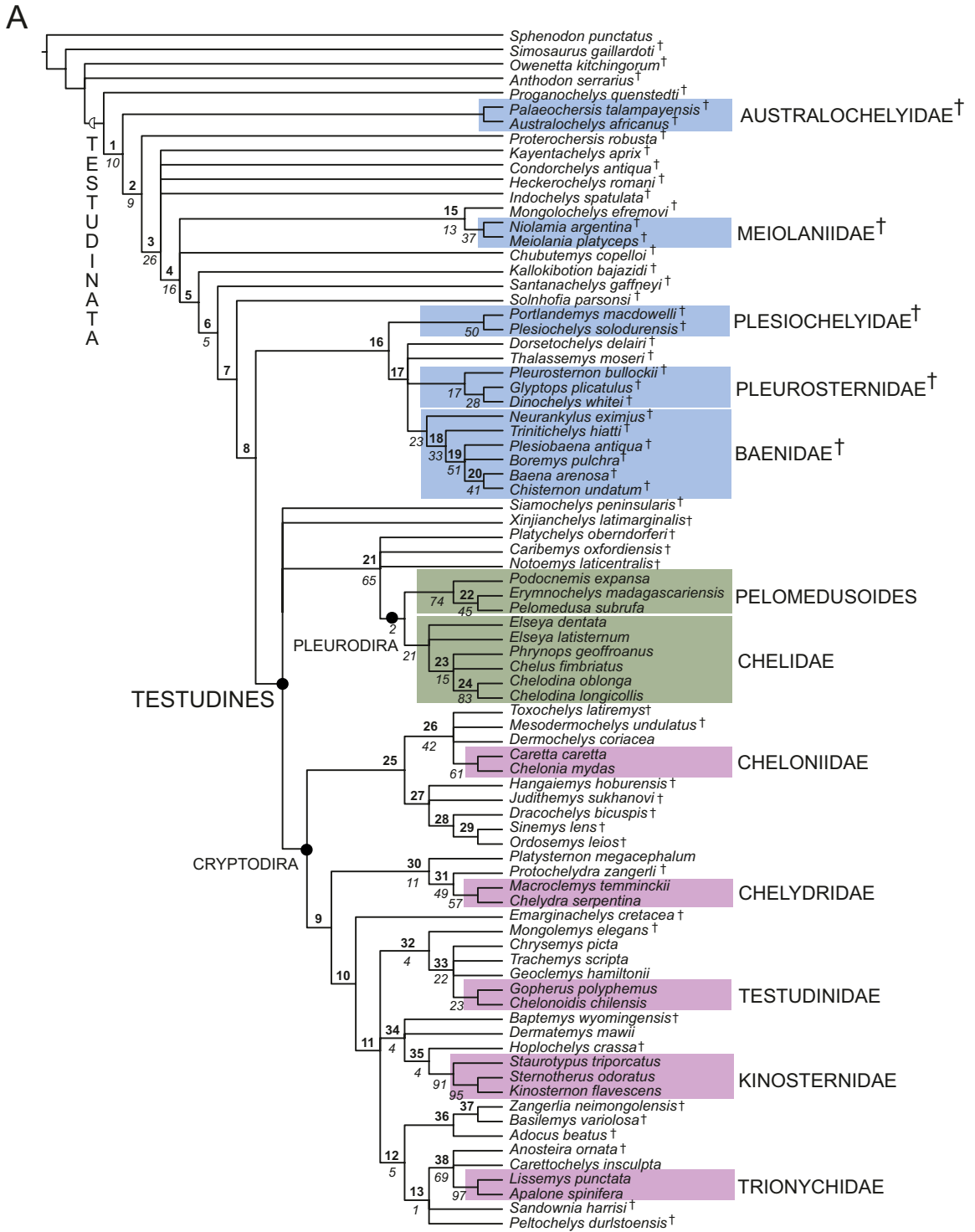


Fig. 1. Morphological phylogenetic analysis of extinct and extant taxa. Strict consensus tree of 19440 MPTs of 479 steps each. Numbers in bold above the nodes represent node number. Numbers in italics under the nodes represent GC Jackknife values (for Group present/Contradicted; difference between the frequency in which a given group is retrieved in the jackknife replicates and the most frequent contradictory group). Light blue: extinct recognized clades. Pink: Cryptodiran clades. Green: Pleurodiran clades.

(see Goloboff *et al.*, 2003). One thousand jackknife replicates were performed conducting a heuristic tree search consisting of 10 replicates of Wagner trees (with random addition sequences) followed by TBR (saving 10 trees per replicate). The results shown are difference in frequencies GC (for Group present/Contradicted) developed by Goloboff *et al.* (2003). The difference in frequencies GC was chosen because it is calculated as the difference between the frequency in which a given group is retrieved in the jackknife replicates and the most frequent contradictory group (Goloboff *et al.*, 2003). Absolute frequencies (the usual method of counting frequencies in jackknife or bootstrap analysis) do not distinguish between a group with a frequency of 0.6 that is never contradicted, and a group with a frequency of 0.6 that is contradicted with a frequency of 0.4. GC frequencies distinguish these two cases, giving lower support values to the second type of groups (Goloboff *et al.*, 2003).

Results

The Clustal alignment (Thompson *et al.*, 1997; for more information on alignment parameters see SI 1) produced the following data matrices: 12S RNA (24 taxa and 350 nucleotides sites), 16S RNA (20 taxa and 489 characters), cytochrome b (22 taxa and 892 characters), RAG-1 (17 taxa and 2790 characters), and the intron of the fingerprint protein 35 (18 taxa and 990 characters). See SI 4 through 8 for information on these datasets. The complete data set including molecular and morphological data was formed of 83 taxa and 5663 characters. Of the molecular characters, 23% are parsimony informative.

Morphological analysis with extinct taxa

The cladistic analysis of extinct and extant taxa based exclusively on morphological data resulted in 19,440 most parsimonious trees (MPTs) of 479 steps. The strict consensus is shown in Fig. 1 (common synapomorphies are listed in SI 9). In these trees, many groups of extinct turtles are placed along the stem of crown group Testudines. These include the most ancient turtles from the Late Triassic (*Proganochelys quenstedti*, *Proterochersis robusta* Fraas 1913, *Palaeochersis talampayensis*), *Kayentachelys aprix* Gaffney, Hutchison, Jenkins, and Meeker 1987, *Condorchelys antiqua* Sterli 2008, *Heckerochelys romani* Sukhanov 2006, and the extinct groups Meiolaniidae, Plesio-

chelyidae, Pleurosternidae, and Baenidae. The MPTs therefore resemble in the position of these extinct taxa emerging alternative hypotheses on turtle evolution (Joyce, 2007), including the morphological study of Sterli (2008). Pleurodira and Cryptodira are closely related and form a basal polytomy with *Xinjiangchelys latimarginalis* (Young and Chow 1953) and *Siamochelys peninsularis* Tong, Buffetaut, and Suteethorn 2004, due to alternative positions of the later two species. All main groups of crown-group turtles recovered as monophyletic. Pleurodira splits in Chelidae and Pelomedusoides, and within Cryptodira, the taxa Trionychidae, Kinosternidae, Testudinidae, Chelydridae, Cheloniidae, and Emydidae, with their basal members, were recovered as monophyletic. In this analysis Cheloniidae and related taxa (plus 'sinemys' and 'macrobaenids') form the sister group of the remaining crown Cryptodira. The position of Chelonioides as the sister group of the remaining extant Cryptodira was also suggested by Brinkman and Wu (1999), Joyce (2007), and Werneburg and Sánchez-Villagra (2009). Although some differences exist, this result is similar to those found by Joyce (2007), Danilov and Parham (2008), and Sterli (2008). In this analysis the root of crown-group Testudines is located between Cryptodira and Pleurodira (Fig. 5).

The following partitioned results are shown as unrooted trees to facilitate the comparison among partitions.

Molecular analyses

Only one MPT of 5483 steps (Fig. 2A) was obtained analyzing the concatenated data matrix of molecular data including five genes (12S RNA, 16S RNA, cytochrome b, RAG-1, and intron of the fingerprint protein R35). The molecular partition retrieved as monophyletic the major groups of crown turtles: Chelidae and Pelomedusoides for Pleurodira and Trionychia, Kinosternoidea, Testudinidae + Geoemydidae, Chelydridae, Chelonioides, and Emydidae for Cryptodira. Almost all of these clades are well supported by Jackknife values (>80 %); however, no Jackknife values were recovered for the internal branches, except for the branch dividing Pleurodira and Cryptodira. The analysis depicts Kinosternoidea and Trionychia as the successive adjacent groups of Pleurodira showing that the molecular signal is responsible for the close affinities of Pleurodira and Trionychia in the total evidence analysis (see below).

The separate analyses of each of the analyzed genes are summarized in Fig. 2B-F. Given that the

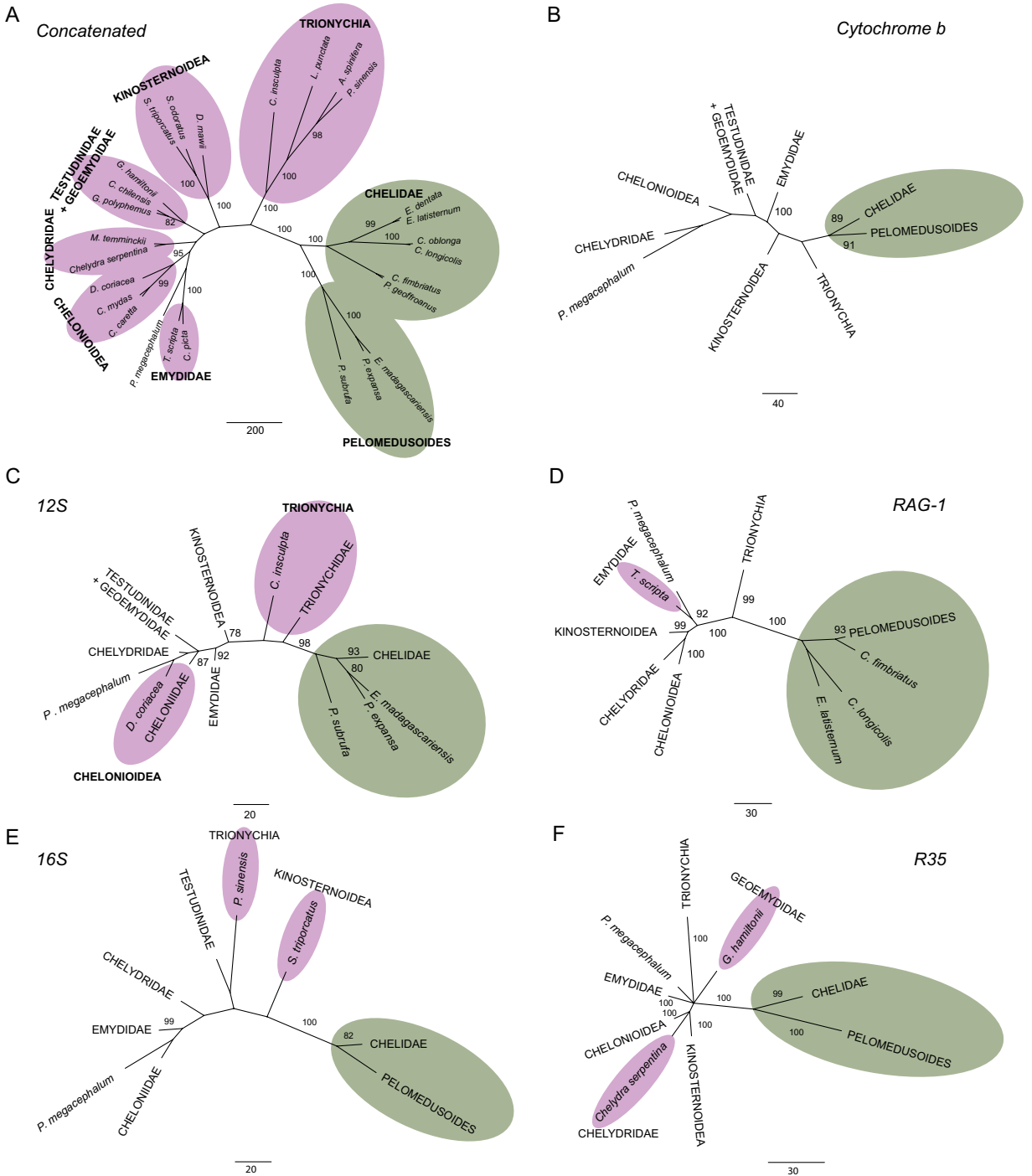


Fig. 2. A) Molecular phylogenetic analysis of the 5 sequences (12S RNA, 16S RNA, cytochrome b, RAG-1, and intron of the fingerprint protein 35). Only one MPT of 5483 steps were recovered. B) Molecular analysis of cytochrome b sequence. Only one MPT of 2061 steps was recovered. C) Molecular analysis of 12S RNA sequence. Strict consensus of two MPTs of 644 steps each. D) Molecular analysis of the RAG-1 sequence. Only one MPT of 927 steps was recovered. E) Molecular analysis of 16S RNA sequence. Only one MPT was found of 838 steps. F) Molecular analysis of the intron of the fingerprint protein 35. Strict consensus of two MPTs of 972 steps each. Jackknife values below 70 are not shown. Pink: Cryptodiran clades. Green: Pleurodiran clades.

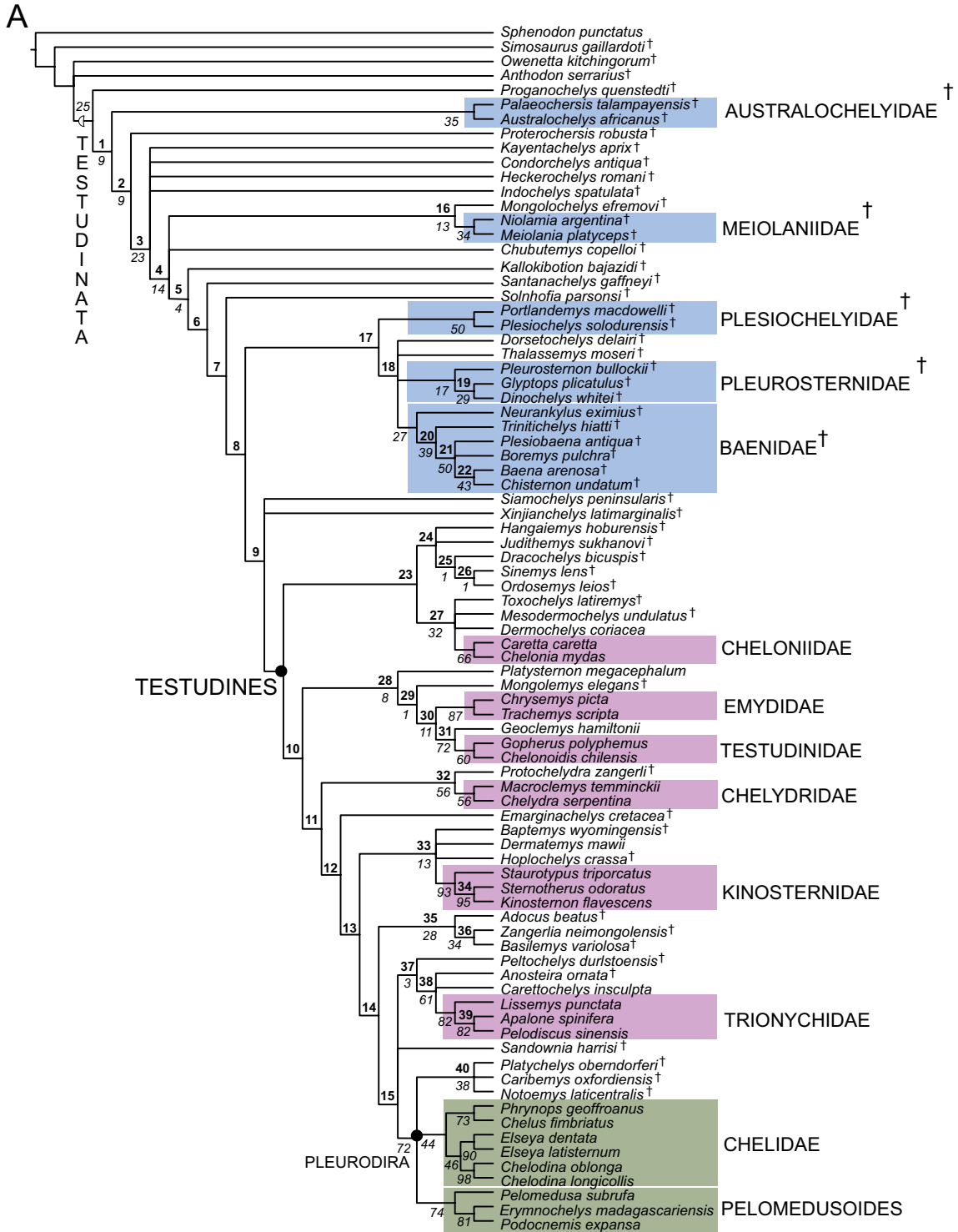


Fig. 4. Total evidence phylogenetic analysis. Strict consensus tree of 12960 MPTs of 5972 steps each. Numbers represent GC Jackknife values. Numbers in bold above the nodes represent node number. Numbers in italics under the nodes represent GC Jackknife values. Light blue: extinct recognized clades. Pink: Cryptodiran clades. Green: Pleurodiran clades.

Pleurodira is placed as the sister group of Trionychia in this analysis, although this clade is not supported under Jackknife resampling. Most nodes have low jackknife values, except those of the clades Kinosternidae, Trionychidae, Pelomedusidae, and the genera *Euseya* Gray 1867 and *Chelodina* Fitzinger 1826 (Fig. 4).

The most unorthodox result of these topologies is the paraphyly of Cryptodira due to the position of Pleurodira as the sister group of Trionychia. In order to test the robustness of this result, a constrained analysis was performed forcing the monophyly of Cryptodira. This analysis resulted in approximately 27,000 MPTs of 5977 steps, which are 5 steps longer than MPTs of the unconstrained analysis. A total evidence analysis using Joyce's (2007) morphological dataset retrieved the same result as the total evidence analysis shown in the present paper, Pleurodira being nested inside Cryptodira and Trionychia being its sister group.

The result obtained from the present total evidence analysis, is an unorthodox result that, as it will be explained below, could be caused by the combination of two main factors: the strong phylogenetic signal of the molecular data that relates Pleurodira with Trionychia and the strong signal of the extinct turtles that roots Testudines in the clade leading to Chelonioidea.

Discussion

Position of Pleurodira and the rooting problem

As was mentioned above, comparison between the total evidence analysis and the morphological analysis

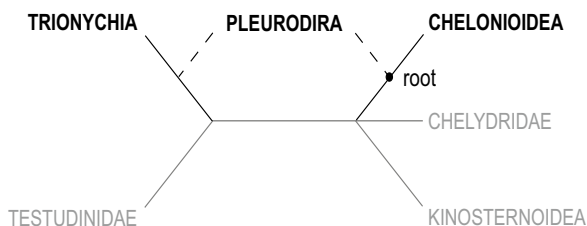


Fig. 5. Simplified unrooted tree of cryptodiran turtles (based on morphological analysis of extant taxa) showing the alternative position of Pleurodira: Morphological analysis shows that Chelonioidea and Pleurodira are the successive sister groups of remaining Cryptodira, while total evidence analysis suggests Trionychia and Pleurodira as successive sister groups. The root of Testudines is placed in the branch leading to Chelonioidea in the total evidence analysis and in the morphological analysis including fossils.

(Fig. 1, 4) indicates that the main difference is the position of Pleurodira, which is independent from the rooting of the tree. Illustrated in a simplified unrooted tree the interrelationships among the major clades of cryptodiran turtles, the two alternative positions of Pleurodira are shown (Fig. 5; SI 10).

Direct comparisons with previous phylogenetic studies based on molecular data of crown-turtles are hampered by the rooting of the phylogenetic trees of most molecular studies published to date. The main difference between the previous analyses and the analyses presented here is the location of the root. If the results of previous inclusive phylogenetic analyses of turtle evolution are viewed as unrooted trees (e.g. cytochrome b of Shaffer *et al.*, 1997; RAG-1 of Krenz *et al.*, 2005; R35 of Fujita *et al.*, 2004 and of Near *et al.*, 2005; Thomson and Shaffer, 2010), Pleurodira is depicted as the adjacent group to Trionychia (Trionychidae + Carettochelyidae) in all the mentioned cases, as in the analyses reported here. Most molecular studies have assumed *a priori* the monophyly of Pleurodira and Cryptodira and rooted the phylogenetic trees at the branch that joins these two groups (e.g. Shaffer *et al.*, 1997; Fujita *et al.*, 2004; Thomson and Shaffer, 2010; and possibly Near *et al.*, 2005). In many of these studies, therefore, Trionychia is depicted as the most basal group of Cryptodira, followed by Kinosternoidea, and Chelonioidea and Chelydridae are depicted as the most derived cryptodirans.

An exception to this *a priori* assumption of monophyly is the parsimony analysis of Krenz *et al.* (2005) of the RAG-1. These authors tested the monophyly of Pleurodira and Cryptodira adding two outgroup species [(*Gallus gallus* (Linnaeus 1758) and *Alligator mississippiensis* (Daudin 1802)]. In the parsimony analysis, the root was located in the branch that leads to Trionychia, which was the longest branch of the tree, and therefore Cryptodira was depicted as paraphyletic, but again placing Trionychia as the most basal clade. In the maximum likelihood analysis the authors recovered Cryptodira as monophyletic arguing that the non-monophyletic Cryptodira resulted from a methodological issue under maximum parsimony, however, the support for this clade in the maximum likelihood approach was weak (56%).

Placing the position of the root for crown-group turtles is highly problematic since most sequences show short internal branches separating the major groups and relatively long terminal branches. Furthermore, all extant outgroups (e.g. lepidosaurs, archosaurs, mammals)

are highly divergent and separated from crown turtles by an extremely long branch. As pointed out by Wheeler (1990) and Shavit *et al.* (2007), finding the location of the root in these cases is highly problematic and in some cases the outgroup taxa may attach to the longest branches of the ingroup. This is the case, for example, of the preliminary analyses performed during this study where up to four taxa were included as outgroup (*Sphenodon punctatus*, *Gallus gallus*, *Alligator mississippiensis*, and *Monodelphis domestica* Wagner, 1842) and analyzed under maximum parsimony (MP). In the 55% of the analyses (mainly cytochrome b, Rag-1, and concatenated), the outgroup taxa fixed to the long branch of *Carettochelys insculpta* (Trionychia), while only the 34% of the analyses fixed the outgroup taxa between Cryptodira and Pleurodira (12S RNA and 16S RNA). For more information see SI 10 and 11. Similar long-standing phylogenetic problems are also present in other groups of amniotes that result from a rapid evolutionary radiation, such as the debated interrelationships among major modern lineages of insects, mammals, birds, and angiosperms (Cooper and Penny, 1997; Springer *et al.*, 2003; Soltis *et al.*, 2004; Whitfield and Kjer, 2008).

In this regard, morphology, and particularly the morphological information present in extinct taxa, can provide useful information to resolve the position of the root of the ingroup (see above). In the total evidence analysis the position of the root of the crown group Testudines is placed close to Cheloniidae. The addition of the molecular sequences moves Pleurodira as the sister group of the derived cryptodiran clade Trionychia but does not alter the position of the root that is robustly supported by the morphological information given by the extinct species.

Short and not well supported internal branches and long external branches in molecular analyses: Rapid radiation or lack of information?

A common feature shared by all the molecular analyses presented here is the weak Jackknife support (<70%) of the internal branches connecting the major clades of cryptodiran turtles (Figure 2). This is not unique to the present analysis, but for almost all the molecular analyses published until now (Shaffer *et al.*, 1997; Fujita *et al.*, 2004; Krenz *et al.*, 2005). The only exception seems to be the supermatrix analysis of Thomson and Shaffer (2010), where some internal nodes are recovered with moderate to good support values (>70%). Another feature of the molecular

analyses presented here and in previous ones (Shaffer *et al.*, 1997; Fujita *et al.*, 2004; Krenz *et al.*, 2005) is that the internal branches (internodes) are shorter than the branches leading to the terminal branches. Despite of the low support among cryptodiran lineages, the branches leading to the major clades are usually well supported. The available evidence suggests that more data (morphological and molecular) is needed to comprehend whether this low or inexistent support and the short internal branches and the long external branches are due to lack of data (soft polytomy, Coddington and Scharff, 1996) due to a rapid radiation of the crown-group, as it was proposed before by Shaffer *et al.* (1997) and Danilov and Parham (2006). A rapid radiation scenario is also supported by the fossil record. Under the phylogenetic hypothesis accepted here (Fig. 1) the first representatives of crown-group Testudines appear between the Middle and Late Jurassic (see also Danilov and Parham, 2008) and soon after the diversification of Testudines is evident in the fossil record by the origin of many new clades.

Importance of fossils

The comparison between the morphological analysis with extinct taxa and the total evidence analysis suggest Chelonioidea and Trionychia as the most basal clade of Cryptodira, respectively. If we contrast both hypotheses with the fossil record, it is remarkable that the minimum age for the clade Testudines is Upper Jurassic and it is given by the stem trionychian *Yehguia tatsuensis* (Yeh 1963) from Sichuan Province (China) (Danilov and Parham, 2006). On the other hand, the oldest records of total-group Chelonioidea are much younger, dating from the Lower Cretaceous (*Bouliachelys* Kear and Lee 2006, *Notochelone* Lydekker 1889, and possible *Santanachelys* Hirayama 1998; in Kear and Lee, 2006). Although the paleontological record seems to be more consistent with the total evidence hypothesis, accounting for the nature of the fossil record, new findings could change this statement. The fossils are not only useful to date the minimum age of clade origin, but bear unique combination of characters that can help to test the relationships among extant groups (Gauthier *et al.*, 1988; Donoghue *et al.*, 1989). The importance of extinct turtles for testing the relationships of the major groups of crown turtles is highlighted when the result of the analysis of the morphological dataset including all available taxa (both extinct and extant; see Fig. 1)

is compared with that of the same morphological dataset but including only extant taxa (Fig. 3). The addition of extinct taxa is important to assess the internal relationships of Cryptodira, resolving several polytomies including the one that clusters Trionychia with all the members of Testudinoidea (Testudinidae + Emydidae + Geoemydidae) and the one that joins Kinosternoidea, Chelonioidae, and Chelydridae. Furthermore, the inclusion of extinct taxa provides the root of the crown group in both the morphological analyses including extinct taxa and the total evidence. The extinct taxa place the root of the crown group between Cryptodira and Pleurodira, being Cheloniidae and its sister clade ('sinemyds' and 'macrobaenids') the sister group of all remaining cryptodiran turtles (Figs 1, 4). The inclusion of only one basal turtle (*Proganochelys quenstedti*) in the morphological analysis of extant taxa roots the crown group in the branch between Cryptodira and Pleurodira. Moreover, when only one extinct taxon of the crown group (*e.g.* *Ordozemys leios* Brinkman and Peng 1993) is added, the root of the crown Cryptodira is placed in the branch leading to Cheloniidae. The maintenance of the position of the root with the addition of more extinct taxa and even in the total evidence analysis indicates its robustness.

Testing the effects of long branches

As seen in the partitioned molecular analyses and in the concatenated molecular dataset (Fig. 2, SI 12), Trionychia (Trionychidae + Carettochelyidae) and Pleurodira (Chelidae + Pelomedusoides) are depicted as adjacent groups and the branches leading to these two groups are among the longest branches of the entire tree. In order to test whether the position of Pleurodira as the adjacent group to Trionychia could be related to the long-branch attraction problem, several analyses excluding Pleurodira, Trionychia, and Kinosternoidea were performed (see SI 12-18). The results show that the phylogenetic relationships among these clades are usually stable and their position does not change when one of the mentioned taxa is excluded from the analysis. Following the suggestions of Siddall and Whiting (1999) and Pol and Siddall (2001) these results can be interpreted as a rejection of a LBA explanation for the close position of Pleurodira and Trionychia. To further test this, the five genes were used separately in Bayesian analyses and maximum likelihood. In all the cases the topologies (SI 19) retrieved Trionychia as the adjacent group of Pleurodira.

Conclusions

The most outstanding results of this contribution are the alternative position of Pleurodira according to the different sources of data and the robustness of the root given by the morphological information of extinct taxa. A major point of disagreement between the morphological information (especially those on extinct taxa) and the molecular information (especially the cytochrome b, 12S RNA, and RAG-1) is the contradictory phylogenetic signal regarding the position of Pleurodira, which allies this group closer to Cheloniidae or Trionychia, respectively. On the other hand, the signal of the extinct taxa to root the crown-group Testudines near the clade leading to Cheloniidae is so strong that it prevails not only in the morphological tree with extinct taxa, but in the total evidence tree as well. The combination of the position of Pleurodira as the sister group of Trionychia in the molecular analyses and the strong signal of the root in crown-group Testudines results in the unorthodox result of Cryptodira being paraphyletic with Pleurodira well nested inside in the total evidence analysis. The results shown in this paper highlight promising future areas of research, both within the morphological and on the molecular fields. In addition to gathering more character data, future studies should include new extinct and extant taxa from crown-group turtles, to recover more information about the origin and diversification of crown-group Testudines, one of the most peculiar clades of living amniotes.

Acknowledgements

Thanks to M.S. de la Fuente for his support, S. Espert and S. Catalano for their help with the molecular data analyses, and D. Pol for his help with all the topics concerning cladistic methodology. E. Ruigomez (Museo Paleontológico Egidio Feruglio, Argentina), M. Reguero and J. Williams (Museo de La Plata, Argentina), A. Kramarz and J. Faivovich (Museo Argentino de Ciencias Naturales, Argentina), S. Chapman (The Natural History Museum, UK), A. Wynn and T. Hartsel (United States National Museum, USA), E.S. Gaffney and C. Mehling (American Museum of Natural History, USA), W.G. Joyce (Yale Peabody Museum, USA), E. Müller-Merz (Naturmuseum Solothurn, Switzerland), C. Meyer (MH, Switzerland), J. Müller (Humboldt-Universität zu Berlin Museum für Naturkunde, Germany), and R. Schoch (Staatliches Museum für Naturkunde Stuttgart, Germany) are thanked for the access to comparative collection. M.S. de la Fuente and D. Pol are also thanked for reading early versions of this manuscript. Special thanks are given to W.G. Joyce, M. Laurin, and an anonymous reviewer for the detailed revision that greatly improved the quality of the manuscript. This work was partially

supported by the Richard Estes Memorial Grant, a DAAD fellowship to J.S., 'Exploración paleontológica de la Patagonia' grant of Lampadian Foundation and RIG5598 grant of University of Louisville (G.W. Rougier), PIP grant 112-200801-00795 (M.S. de la Fuente), and PICT grant 2006-1756 (D. Pol).

References

- Anquetin J, Barrett PM, Jones MEH, Moore-Fay S, Evans SE. 2009. A new stem turtle from the Middle Jurassic of Scotland: new insights into the evolution and palaeoecology of basal turtles. *Proceedings of the Royal Society B* 276: 879-886.
- Brinkman D, Wu X-C. 1999. The skull of *Ordosemys*, an Early Cretaceous turtle from Inner Mongolia, People's Republic of China, and the interrelationships of Eucryptodira (Chelonia, Cryptodira). *Paludicola* 2:134-147.
- Burke AC. 1989. Development of the turtle carapace: implications for the evolution of a novel Bauplan. *Journal of Morphology* 199: 363-378.
- Coddington JA, Scharff K. 1996. Problems with 'soft' polytomies. *Cladistics* 12:139-145.
- Cooper A, Penny D. 1997. Mass survival of birds across the Cretaceous-Tertiary boundary: molecular evidence. *Science* 275: 1109-1113.
- Danilov IG, Parham JF. 2006. A redescription of '*Plesiochelys tatsuensis*' from the Late Jurassic of China, with comments on the antiquity of the crown clade Cryptodira. *Journal of Vertebrate Paleontology* 26: 573-580.
- Danilov IG, Parham JF. 2008. A reassessment of some poorly known turtles from the Middle Jurassic of China, with comments on the antiquity of extant turtles. *Journal of Vertebrate Paleontology* 28: 306-318.
- deBraga M, Rieppel O. 1997. Reptile phylogeny and the interrelationships of turtles. *Zoological Journal of the Linnean Society* 129: 281-354.
- Donoghue MJ, Doyle JA, Gauthier J, Kluge AG, Rowe T. 1989. The importance of fossils in phylogenetic reconstruction. *Annual Review of Ecology and Systematics* 20: 431-460.
- Engstrom TN, Shaffer HB, McCord WP. 2004. Multiple data sets, high homoplasy, and the phylogeny of softshell turtles (Testudines: Trionychidae). *Systematic Biology* 53: 693-710.
- Fujita MK., Engstrom TN, Starkey DE, Shaffer HB. 2004. Turtle phylogeny: insights from a novel nuclear intron. *Molecular Phylogenetics and Evolution* 31: 1031-1040.
- Gaffney ES. 1975. A phylogeny and classification of the higher category of turtles. *Bulletin of the American Museum of Natural History* 155: 389-436.
- Gaffney ES. 1996. The postcranial morphology of Meiolania platyceps and a review of the Meiolaniidae. *Bulletin of the American Museum of Natural History* 229: 1-166.
- Gaffney ES, Meylan PA. 1988. A phylogeny of turtles. Pp. 157-219 in: Benton MJ, ed., *The Phylogeny and Classification of the Tetrapods*. Oxford: Clarendon Press.
- Gaffney ES, Rich TH, Vickers-Rich P, Constantine A, Vacca R, Kool L. 2007. *Chubutemys*, a new eucryptodiran turtle from the Early Cretaceous of Argentina, and the relationships of Meiolaniidae. *American Museum Novitates* 3599: 1-35.
- Gauthier J, Kluge AG, Rowe T. 1988. Amniote phylogeny and the importance of fossils. *Cladistics* 4: 105-209.
- Giribet G, Wheeler WC. 1999. On gaps. *Molecular Phylogenetics and Evolution* 13: 132-143.
- Goloboff PA, Farris JS, Källersjö M, Oxelman B, Ramírez MJ, Szumik CA. 2003. Improvements to resampling measures of group support. *Cladistics* 19: 324-332.
- Goloboff P, Farris J, Nixon K. 2008a. TNT: Tree Analysis Using New Technology, version 1.1 (Willi Hennig Society Edition). Program and documentation available at <http://www.zmuc.dk/public/phylogeny/tnt>.
- Goloboff PA, Farris JS, Nixon K. 2008b. A free program for phylogenetic analysis. *Cladistics* 24: 774-786.
- Hill RV. 2005. Integration of morphological data sets for phylogenetic analysis of Amniota: The importance of integumentary characters and increased taxonomic sampling. *Systematic Biology* 54: 530-547.
- Hirayama R, Brinkman DB, Danilov IG. 2000. Distribution and biogeography of non-marine Cretaceous turtles. *Russian Journal of Herpetology* 7: 181-198.
- Iverson JB, Brown RM, Akre TS, Near TJ, Le M, Thomson RC, Starkey DE. 2007. In search of the tree of life for turtles. Pp 85-106 in: Shaffer HB, FitzSimmons NN, Georges A, Rhodin AGJ, eds., *Defining Turtle Diversity: Proceedings of a Workshop on Genetics, Ethics, and Taxonomy of Freshwater Turtles and Tortoises*. Chelonian Research Monographs, vol. 4.
- Joyce WG. 2007. Phylogenetic relationships of Mesozoic turtles. *Peabody Museum Bulletin* 48: 3-102.
- Joyce WG, Parham JF, Gauthier JA. 2004. Developing a protocol for the conversion of rank-based taxon names to phylogenetically defined clade names, as exemplified by turtles. *Journal of Paleontology* 78: 989-1013.
- Kear BP, Lee MYS. 2006. A primitive protostegid from Australia and early sea turtle evolution. *Biology Letters* 2: 116-119.
- Krenz JG, Naylor GJP, Shaffer HB, Janzen FJ. 2005. Molecular phylogenetics and evolution of turtles. *Molecular Phylogenetics and Evolution* 37: 178-191.
- Lanyon SM. 1985. Detecting internal inconsistencies in distance data. *Systematic Zoology* 34: 397-403.
- Laurin M, Reisz RR. 1995. A reevaluation of early amniote phylogeny. *Zoological Journal of the Linnean Society* 113: 165-223.
- Lee MSY. 1993. The origin of the turtle body plan: bridging a famous morphological gap. *Science* 261: 1716-1720.
- Lee MSY. 1995. Historical burden in systematics and the interrelationships of 'Parareptiles'. *Biological Reviews* 70: 459-547.
- Lee MSY. 1996. Correlated progression and the origin of turtles. *Nature* 379: 812-815.
- Lee MSY. 1997. Pareiasaur phylogeny and the origin of turtles. *Zoological Journal of the Linnean Society* 120: 197-280.
- Müller J. 2003. Early loss and multiple return of the lower temporal arcade in diapsid reptiles. *Naturwissenschaften* 90: 473-476.
- Müller J. 2004. The relationships among diapsid reptiles and the influence of taxon selection. Pp. 379-408 in: Arratia G, Wilson MVH, Cloutier R, eds., *Recent Advances in the Origin and Early Radiation of Vertebrates*. München: Verlag Dr. Friedrich Pfeil.

- Near TJ, Meylan PA, Shaffer HB. 2005. Assessing concordance of fossil calibration points in molecular clock studies: an example using turtles. *American Naturalist* 165: 137-146.
- Parham JF, Feldman CR, Boore JL. 2006. The complete mitochondrial genome of the enigmatic bigheaded turtle (*Platysternon*): description of unusual genomic features and the reconciliation of phylogenetic hypotheses based on mitochondrial and nuclear DNA. *BMC Evolutionary Biology* 6: 1-11.
- Pol D, Siddall ME. 2001. Biases in maximum likelihood and parsimony: a simulation approach to a 10-taxon case. *Cladistics* 17: 266-281.
- Reisz RR, Laurin M. 1991. *Owenetta* and the origin of turtles. *Nature* 349: 324-326.
- Rieppel O, deBraga M. 1996. Turtles as diapsid reptiles. *Nature* 384: 453-455.
- Rieppel O, Reisz RR. 1999. The origin and early evolution of turtles. *Annual Review of Ecology and Systematics* 30: 1-22.
- Rougier GW, de la Fuente MS, Arcucci AB. 1995. Late Triassic turtles from South America. *Science* 268: 855-858.
- Shaffer HB, Meylan PA, McKnight ML. 1997. Test of turtle phylogeny: molecular, morphological, and paleontological approaches. *Systematic Zoology* 46: 235-268.
- Shavit L, Penny D, Hendy MD, Holland BR. 2007. The problem of rooting rapid radiations. *Molecular Biology and Evolution* 24: 2400-2411.
- Siddall ME, Whiting MF. 1999. Long-branch abstractions. *Cladistics* 15: 9-24.
- Soltis DE, Albert VA, Savolainen V, Hilu K, Qiu Y-L, Chase MW, Farris JS, Stefanovic S, Rice DW, Palmer JD, Soltis PS. 2004. Genome-scale data, angiosperm relationships, and 'ending incongruence': a cautionary tale in phylogenetics. *Trends in Plant Science* 9: 477-483.
- Springer MS, Murphy WJ, Eizirik E, O'Brien SJ. 2003. Placental mammal diversification and the Cretaceous-Tertiary boundary. *Proceedings of the National Academy of Sciences* 100: 1056-1061.
- Sterli J. 2008. A new, nearly complete stem turtle from the Jurassic of South America with implications for turtle evolution. *Biology Letters* 4: 286-289.
- Sterli J, de la Fuente MS, Rougier GW. 2007. Anatomy and relationships of *Palaeochersis talampayensis*, a Late Triassic turtle from Argentina. *Palaeontographica Abteilung A* 281: 1-61.
- Thompson JD, Gibson TJ, Plewniak F, Jeanmougin F, Higgins DG. 1997. The ClustalX windows interface: flexible strategies for multiple sequence alignment aided by quality analysis tools. *Nucleic Acids Research* 25: 4876-4882.
- Thomson RC, Shaffer HB. 2010. Sparse supermatrices for phylogenetic inference: Taxonomy, alignment, rogue taxa, and the phylogeny of living turtles. *Systematic Biology* 59: 42-58.
- Werneburg I, Sánchez-Villagra MR. 2009. Timing of organogenesis support basal position of turtles in the amniote tree of life. *BMC Evolutionary Biology* 9: 82-91.
- Wheeler WC. 1990. Nucleic acid sequence phylogeny and random outgroups. *Cladistics* 6: 363-367.
- Whitfield JB, Kjer KM. 2008. Ancient Rapid Radiations of Insects: Challenges for Phylogenetic Analysis. *Annual Review of Entomology* 53: 449-472.
- Wilkinson M, McInerney JO, Hirt RP, Foster PG, Embley TM. 2007. Of clades and clans: terms for phylogenetic relationships in unrooted trees. *Trends in Ecology and Evolution* 22: 114-115.

Received: 29 June 2010

Revised and accepted: 23 August 2010

Published online: 24 September 2010

Editor: J.W. Arntzen

On-line supplementary information (SI)

- SI 1:* Character list and changes to Sterli's (2008) matrix.
- SI 2:* Morphological data set.
- SI 3:* GenBank accession numbers of all the sequences (12S RNA, 16S RNA, cytochrome b, RAG-1, and intron fingerprint protein R35).
- SI 4:* 12S RNA data set.
- SI 5:* 16S RNA data set.
- SI 6:* Cytochrome b data set.
- SI 7:* RAG-1 data set.
- SI 8:* Intron of the fingerprint protein R35 data set.
- SI 9:* List of synapomorphies of total evidence analysis, and morphological analysis with extinct and extant taxa.
- SI 10:* Table showing the two main alternative position of Pleurodira and the different position of the root in crown-group turtles. A) Simplified unrooted topology of morphological data with extinct and extant taxa. B) Simplified unrooted topology of molecular data. Circles denote rooting.
- SI 11:* Table showing the summarized results of the different analyses performed including out-group taxa to molecular data. These analyses were exploratory and they were performed under maximum parsimony (MP).
- SI 12:* Fig. 3 at species level. A) Molecular analysis of the 5 sequences (12S RNA, 16S RNA, cytochrome b, RAG-1, and intron of the fingerprint protein R35). Only one MPT of 5483 steps were recovered. B) Molecular analysis of cytochrome b sequence. Only one MPT of 2061 steps was recovered. C) Molecular analysis of 12S RNA sequence. Strict consensus of two MPTs of 644 steps each. D) Molecular analysis of the RAG-1 sequence. Only one MPT of 927 steps was recovered. E) Molecular analysis of 16S RNA sequence. Only one MPT was found of 838 steps. F) Molecular analysis of the intron of the fingerprint protein 35. Strict consensus of two MPTs of 972 steps each.
- SI 13:* Unrooted trees showing the phylogenetic relationships of turtles using 12S RNA sequence. A) Without Pleurodira. B) Without Trionychia. C) Without Trionychia and Pleurodira. D) Without Trionychia and Kinosternoidea.
- SI 14:* Unrooted trees showing the phylogenetic relationships of turtles using 16S RNA sequence. A) Without Pleurodira. B) Without Trionychia. C) Without Trionychia and Pleurodira. D) Without Trionychia and Kinosternoidea.
- SI 15:* Unrooted trees showing the phylogenetic relationships of turtles using cytochrome b sequence. A) Without Pleurodira. B) Without Trionychia. C) Without Trionychia and Pleurodira. D) Without Trionychia and Kinosternoidea.
- SI 16:* Unrooted trees showing the phylogenetic relationships of turtles using RAG-1 sequence. A) Without Pleurodira. B) Without Trionychia. C) Without Trionychia and Pleurodira. D) Without Trionychia and Kinosternoidea.
- SI 17:* Unrooted trees showing the phylogenetic relationships of turtles using intron fingerprint protein R35 sequence. A) Without Pleurodira. B) Without Trionychia. C) Without Trionychia and Pleurodira. D) Without Trionychia and Kinosternoidea.
- SI 18:* Unrooted trees showing the phylogenetic relationships of turtles using all the molecular data (12S RNA, 16S RNA, cytochrome b, RAG-1, and intron fingerprint protein R35 sequences). A) Without Pleurodira. B) Without Trionychia. C) Without Trionychia and Pleurodira. D) Without Trionychia and Kinosternoidea.
- SI 19:* Bayesian analysis results. A) Cytochrome b sequence. B) 12S RNA sequence. C) RAG-1 sequence. D) 16S RNA sequence. E) Intron of the fingerprint protein 35 sequence. Shown values: posterior probabilities (asterisks denote 100%). Values below 80% are not shown. Bayesian analyses were performed using MrBayes (Huelsenbeck and Ronquist, 2001. MrBayes: Bayesian inference of phylogeny. *Bioinformatics* 17:754-755). Two analyses were run simultaneously and they were initiated with random trees. The analyses run for 1,000,000 generations and the Markov chains were sampled every 100 generations. MrModeltest v2 (Nylander, 2004. MrModeltest v2. Evolutionary Biology Centre, Uppsala University, Uppsala) found the GTR + G model is more accurate for 12S RNA, 16S RNA, and intron R35 genes, and GTR + I + G model for cytochrome b and RAG-1 (the same as in ML analyses).